

fine | AMPLIGAME

AM8 USER'S GUIDE



AS Version:25-V10

CONTENTS

| | |
|--|-------|
| Guidelines for Use | 3-5 |
| Function Key Instruction | 5-8 |
| Computer Set-up (Windows & MAC OS) | 9-16 |
| Recording Software Settings | 16-17 |
| Important Notice | 17-18 |

WHAT'S IN THE BOX

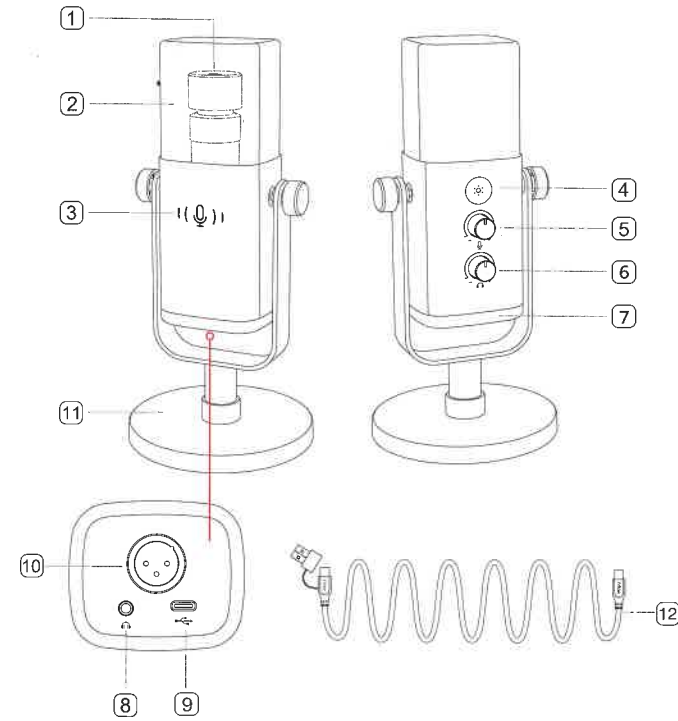
- 1X Dynamic Microphone with Windscreen
- 1X USB-C to USB-A/C Cable 6.5ft (2m)
- 1X Mic Based Stand
- 1X User's Manual

PRODUCTION DESCRIPTION

- 1 Microphone Capsule-Dynamic microphone element with cardioid polar pattern. (Always keep the top of the mic facing the audio source.)
- 2 Flocking Windscreen-Offers maximum protection from plosive breath noise. (It is suggested that do not remove the windscreen and use the original one for recording to keep better sound quality.)
- 3 Mute Button and LED Indicator-Tap to mute or unmute the mic. If the indicator light is green, the mic is active and if it is red, the mic is muted.
- 4 RGB Button-Tap to select modes/colors or long press to turn on/off the RGB lighting.
- 5 Microphone Gain-Control the sensitivity of the mic capsule.
- 6 Headphones Volume Control-Control the sound of real-time monitoring.
- 7 RGB Lighting-The multicolored RGB lighting on mic with dynamic RGB flowing, breathing gradient and static single color light effects.
- 8 Headphone Jack-1/8 inch (3.5 mm) stereo jack for monitoring your voice in real time.

1

- 9 Type-C Port-Connect the mic directly to computer or PS4/5 via the included USB cable.
- 10 XLR Port-Connect to sound card, mixer or audio interface with XLR cable (Not Included).
- 11 Mic Stand-Stably hold the mic.
- 12 USB-C to USB-A/C Cable 6.5ft (2m)-For connecting the mic to computer or game console (except Xbox). (Only the included USB cable is 100% guaranteed for compatibility.)

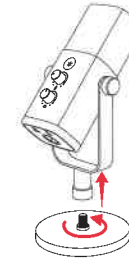


2

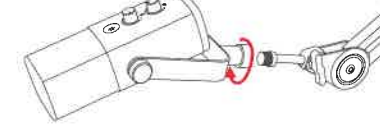
GUIDELINES FOR USE

► Installation and Use

1. Counterclockwise screw the base stand into the microphone, until the stand is firmly connected with the mic.

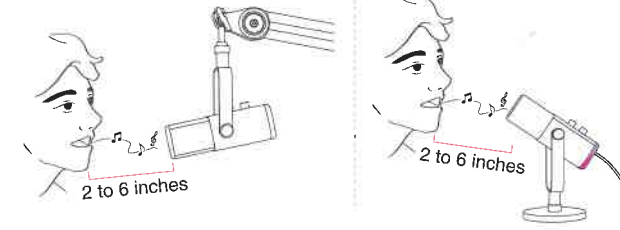


2. If you want to use the mic with arm stand (Not Included), clockwise screw the mic to the arm stand, until they are firmly connected.



3. AM8 is an end-addressing dynamic microphone. **Always keep the top of the mic facing the audio source.**

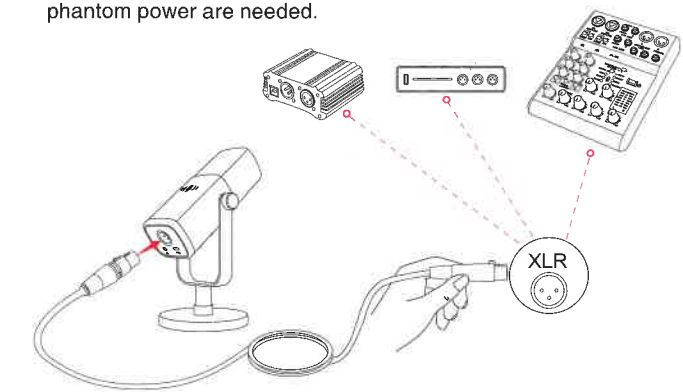
Tips: It is suggested that speak into the mic within 2 to 6 inches, and adjust the microphone input gain to a desired level you want.



3

► XLR Port Connection

1. Fully plug the XLR cable (Not Included) female end with the right angle into the XLR port at the mic bottom, and then plug the male end to sound card, mixer or audio interface. No preamp or phantom power are needed.



2. For better output sound quality, it is recommended that keep the speaking distance at 2 to 6 inches and adjust the microphone input gain on your sound card, mixer or audio interface, to get a desired level.

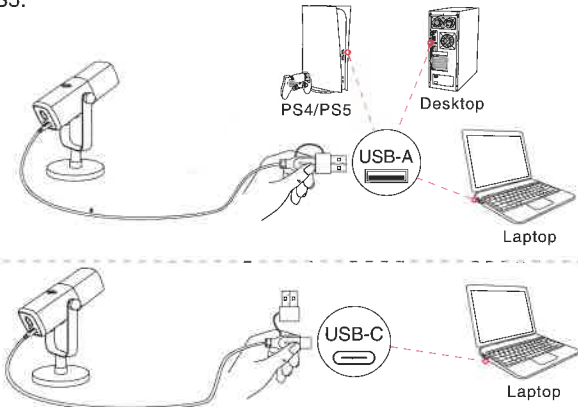
Tips:

- If you need to connect the mic with different devices via Type-C port and XLR port at the same time. It is suggested to connect the XLR first, and then Type-C. (Or there may be no sound from the XLR connection.)
- All the function keys and headphones monitoring on the mic are only available when using USB-C port connection, but invalid when using XLR port connection. (You can operate the mic on sound card, mixer or audio interface when using XLR connection.)

4

► **USB-C Port Connection**

1. Plug the USB-A connector or USB-C connector to the USB port of your computer. It depends on what kind of available USB ports there are on your computer. Plug the USB-A connector to PS4 or PS5.

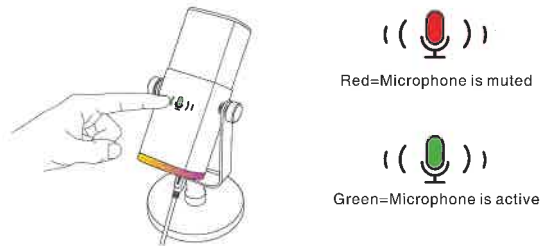


2. Adjust the mic volume via mic gain knob.

FUNCTION KEY INSTRUCTION (Only Applicable for USB Connection)

► **Mute Button**

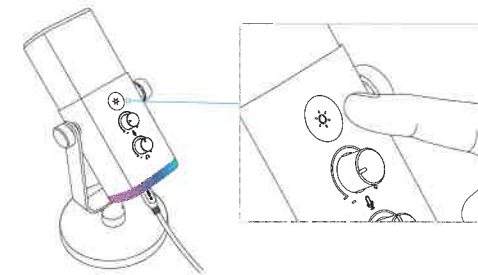
Tap the button to mute / unmute the mic. (Make sure the LED light is green before you use the mic)



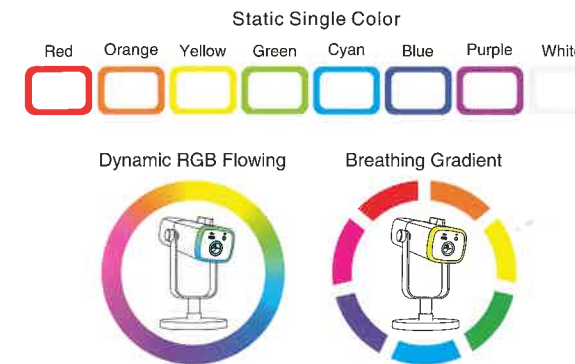
5

► **RGB Button and Lighting Modes**

Long press and hold for 3 seconds to turn on or off RGB lighting. Tap it to select RGB modes or colors.



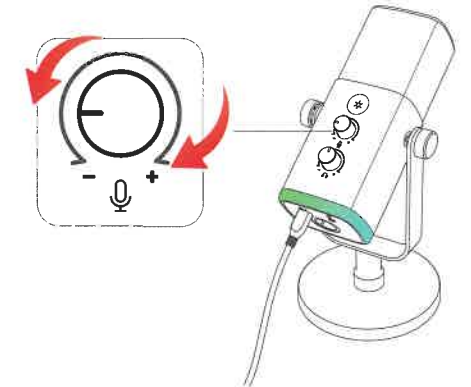
There are 3 RGB mode integrated in the mic: dynamic RGB flowing, breathing gradient and static single color. (The color order of static solid color mode is red, orange, yellow, green, cyan, blue, purple and white.) RGB effect memory function: Whenever the RGB light is turned on again, it will stay in the same RGB effect before it was turned off. (The two dynamic changing modes will start again from the default color.)



6

► **Microphone Gain**

It is suggested that turn down the mic gain first, and then turn it up gradually until a desired loudness. The gain knob on the mic is only available for USB connection. Please adjust mic gain on your device (like mixer) when using XLR port connection.



► **Headphone Jack and Headphones Volume Control**

If you want to monitor your voice in real time, you can plug your headphones to the 3.5mm jack at the mic bottom. You can set the "fine Microphone" as default output device in the system sound settings to output the system's sound to the headphone jack along with the monitoring sound.

1. Make sure to plug your headphones into the headphone jack of microphone fully.
2. When the mic is on (the mute button indicates green) and the mic gain and headphones volume control are not turned to zero, you will hear your voice at once. No need to login any recording software (Apple-Macintosh systems) or click "listen to this Device" (Windows systems).

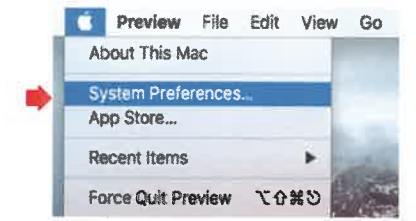
7

APPLE MAC OS (Only Applicable for USB Connection)

Hook up the mic to Mac. The mute button indicates green, means the mic is on. Your Mac will automatically install the driver of the mic. There may be no pop-up message reminding this process though.

► Input Settings

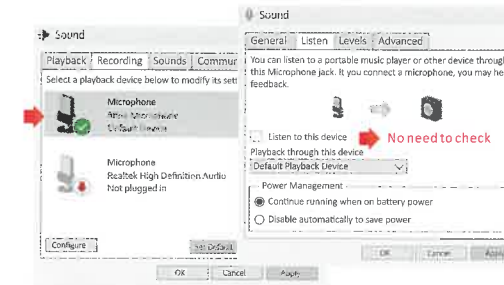
1. Go to the System Preferences.



2. Click Sound to display the Sound preference panel.



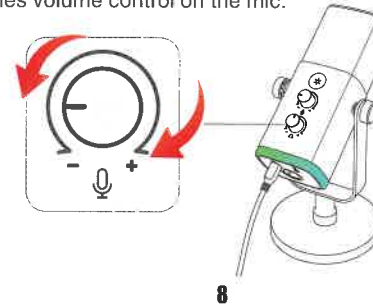
3. Click the Input tab and make certain "fine Microphone" is selected as the default input device. Turn up or down the mic volume by adjusting the gain knob on the mic. (Mic input volume is only controlled by the gain knob but not by computer setting.)

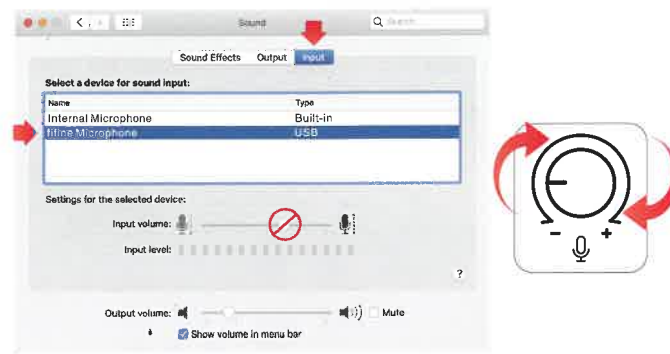


3. If you don't want to monitor your voice but just listen to computer audio, you can go to Sound Control Panel-"Playback"-tab-select "fine Microphone" Speaker-Properties-"Levels" tab-disable the microphone volume.



4. You can adjust the real-time monitoring volume by computer or headphones volume control on the mic.

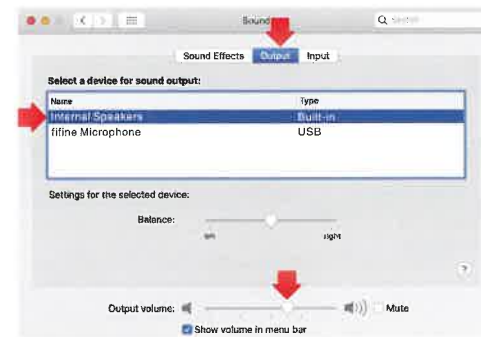




► **Output Settings**

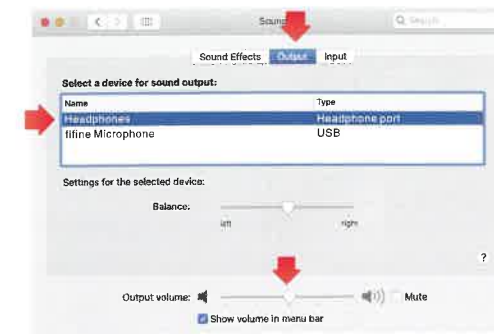
► **Output the audio from Mac**

1. The mic will become the default output device automatically when it plugs into the Mac. If you want to listen to the sound from the built-in speaker of Mac directly, please choose the "Internal Speakers" as output device. Then adjust the output volume.



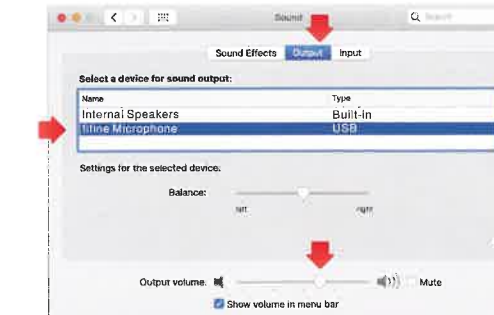
10

2. If you want to connect your headphones to Mac and listen to the sound, please select the Headphones as output device. Then adjust the output volume.



► **Output the audio from the mic**

- Plug the headphones to the 3.5mm jack at the bottom of the mic to monitor your voice in real time. Click the Output tab and choose "fifine Microphone". You can monitor your voice mixed with the sound from Mac. Drag progress bar to adjust output volume. (You can also turn up or down the monitoring volume by adjusting headphones volume control on the mic)



11

WINDOWS (Only Applicable for USB Connection)

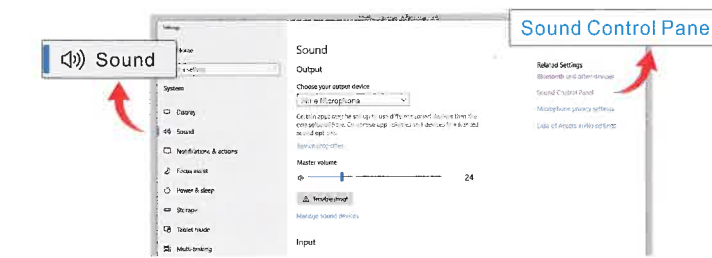
Hook up the mic to computer. The mute button indicates green, means the mic is on. Your computer will automatically install the driver of the mic. There may be no pop-up message reminding this process though.

► **Input Settings**

1. Right click the speaker icon at the bottom right of the screen. Click "Open Sound Settings".

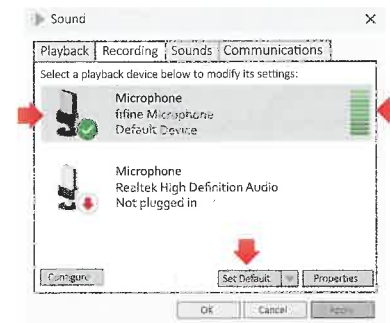


2. Click the Sound Control Panel.

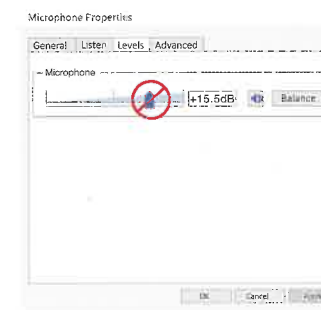


3. Click the Recording tab, and choose "fifine Microphone" as the default device. When you speak into mic, the volume meter will turn green and bounce. If it remains unchanged, please reset the computer and replug the mic in the available USB ports of the computer.

12



4. Adjust input volume. Turn up or down the mic volume by adjusting the gain knob on the mic. (Mic input volume is only controlled by the gain knob but not by computer setting.)

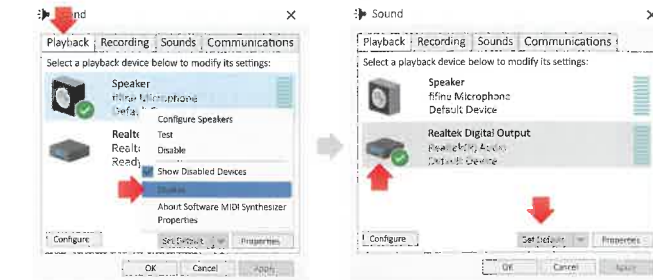


► **Output Settings**

► **Output the audio from computer**

1. The mic will become the default output device automatically when it is plugged into the computer. If you want to listen to the sound from the built-in speaker of the computer directly, please click the

“Playback” tab from the Sound panel and choose “Realtek High Definition Audio” as the default output device.



2. If you want to connect the headphones to the computer and listen to the sound, please select the Headphone as output device.



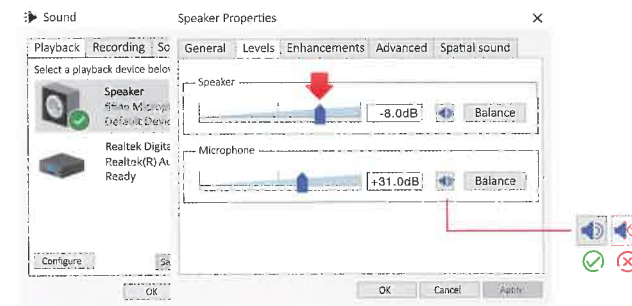
3. Click the speaker that is being used - Properties - Levels, drag the progress bar to adjust volume of output.

► **Output the audio from the mic**

1. Plug the headphones to the 3.5mm jack at the bottom of the mic to monitor your voice in real time. Click the Playback tab from the Sound Panel, and select “fine Microphone” as the default output device. You can monitor your voice mixed with the computer audio.



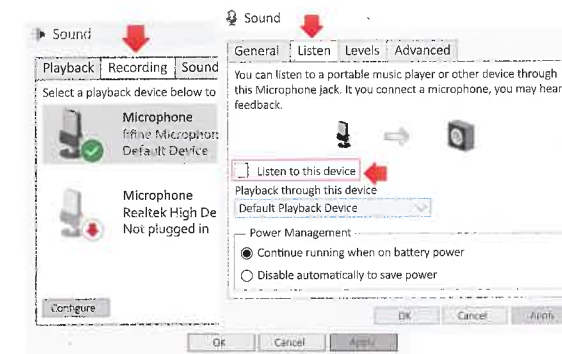
2. Click the Speaker (fifine Microphone) - Properties - Levels, and drag progress bar to adjust output volume. (You can also turn up or down the monitoring volume by adjusting headphones volume control on the mic.)



Tips: (Applicable for Mac and Windows)

1. Make sure the speaker and the microphone are active under the Levels tab.
2. If the computer prompts that it's unable to identify this USB devices, please restart computer and replug the mic into other USB port.

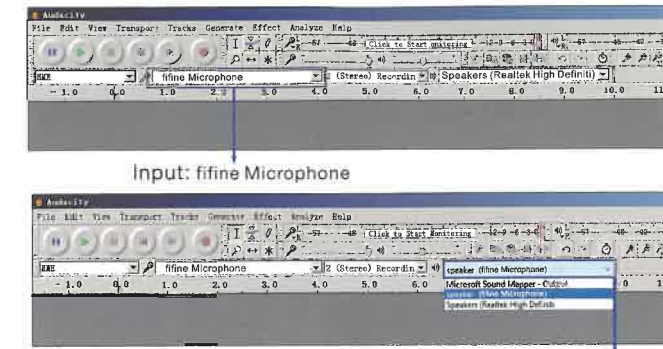
3. If mic is recognized but no sound coming out, please check whether System Sound is mute or whether you have turned the knob on the mic to minimum. Make sure the LED light on mute button is green (means that the microphone is active), and other microphone input devices should be disabled.
 4. If your computer runs windows, please check off the box "Listen to this device" when you are using any recording software (such as Audacity) or chatting software (such as Skype), otherwise you would hear double audio just like echo.
- Click the "Recording" tab and click the fifine Microphone -Properties - Listen - check off the box "Listen to this device" - Apply.



5. If your computer runs windows 10, please go to settings > privacy > microphone and click the Allow apps to access the microphone to ON then restart.

RECORDING SOFTWARE SETTINGS

1. Pls select "fifine Microphone" as the input device from the setting when using recording software. Take the Audacity for example. If you monitor your audio from headphones jack of computer, please select "Headphone (Realtek(R) Audio)" as output device. If you monitor from the mic headphones jack, select the fifine Microphone as output.



Tips: If the recording software (such as Audacity) doesn't recognize the mic, please log out the software first, replug the mic in the computer, and then launch the software again. Then the mic will be in the drop down option of input device.

2. Make sure to check off the box "Listen to this device" from the sound system when you are using any recording software, or else you would hear duet of yourself just like too much echo.
3. For windows computers, we recommend to use Audacity. For Apple computers, you can use the QuickTime Player to test the recording.
4. There are several ways to improve the usage. Come to our website to search the Technical Support solution for your interested subject.

IMPORTANT NOTICE

- Setting volume levels
Ideally, the mic level should be as high as possible without overloading. When you use USB connection, you can adjust the volume by following steps. If you hear distortion, or your recording program shows levels that are consistently overloaded (at peak levels), turn down the mic volume (or level) by the mic gain knob. If your recording program shows insufficient level, turn up the mic

volume (or level) by the mic gain knob. When you use XLR connection, you can adjust the microphone input gain on sound card, mixer or audio interface to set an appropriate volume.

- **Selecting software**

Many recording software can be chosen. Audacity, available for free online is a widely used software. If you plug in the mic AFTER you load Audacity, it may not recognize the mic while it may still record, the results will be unsatisfactory. If that happens, restart Audacity AFTER plugging the USB into your computer and click on *fine* Microphone option.

- **Positioning your microphone**

To achieve the best frequency response, it is important to have the mic capsule (the top of the mic) pointed at the user's mouth, instrument or any other sound source. The best range is 2 to 6 inches.

- **Protecting your microphone**

Avoid leaving your microphone in the open air or in areas where temperature exceed 110° F (43° C) for extended periods. Extremely high humidity should also be avoided.

Tips:

1. Choose your output setting. When you plug microphone to your PC, it cancels the audio from any other audio file played or there's no sound on the playback, you need to manually select the "speaker (Realtek High Definition Audio)" as the default playback device, if you want to output computer audio via the computer built-in speaker.
2. There is no XLR cable included.
3. Microphone input volume can not be adjusted by computer setting.

SPECIFICATION

| | |
|------------------|---------------|
| Model Number: | AM8 |
| Element: | Dynamic |
| Polar Pattern: | Cardioid |
| Connector: | USB-C and XLR |
| Frequency Range: | 50Hz-16KHz |
| S/N Ratio: | >80dB |
| Sensitivity: | -50±3dB |
| Maximum SPL: | 120dB |
| Power Supply: | 5±0.25V |



WARRANTY

Every *Fifine* product comes with a Limited Warranty that in normal use of product will be free of any defects in material or workmanship for a period of one year from its original date of purchase. For detailed warranty info, please refer to the warranty policy on our website, or contact us directly.

CERTIFICATION

Eligible to bear CE Marking.

Authorized European Representative:

Name: AOCE INFORMATION TECHNOLOGY

Address: 61 rue de Lyon 75012 Paris France

Tel: +33-633297410

Authorized British Representative:

Name: AOCE LIMITED

Address: Office Suite 29a 3/F 23 Wharf Street, London, England, SE8 3GG

Tel: +44-759 7659 775

