

## COMMON PROBLEMS AND SOLUTIONS

THE PROBLEM	POSSIBLE REASONS FOR	THE SOLUTION
Pressure gun handle leaks	1.It is not properly installed or locked. 2.The handle body is damaged or the black seal of pressure hose end is damaged.	1. Reinstall the component, install it laced, and lock the component. 2. Replace the handle or the seal of pressure hose end.
Leakage at the joint of the high pressure gun	1.It is not properly installed or locked. 2.The seal at the joint is damaged.	1. Reinstall the component, install it place, and lock the component. 2. Check, lubricate, and relace seals.
High pressure hose joint leaks	1.The pressure hose's end was not locked, and the button on gun handle did not pop up after pressed down to connect the hose. 2.The seal at the joint is damaged. 3.The high-pressure hose is broken.	1. Locked the pressure hose's end, pressed down the button on gun handle and connect the hose. Let the button pop up after connect the hose. 2. Check, lubricate and replace seals. 3. Replace the high-pressure hose directly.
Water leaks at the nozzle joint	1.The nozzle connector is not tightened. 2.The sealing pad in the nozzle connectors missing. 3.The sealing pad inside the nozzle connector is damaged.	1. Check and tighten the connector. 2. Install the gasket. 3. Check and replace the gasket.
Leakage between clear filter head and quick connector	1.The quick connector is incorrectly installed. 2.The sealing ring at the joint of the connector is damaged or missing. 3.The sealing ring at the joint of the connector is missing.	1. Check and reinstall the quick connector according to Assembly Step 15 and Step16. 2. Check or replace the sealing ring. 3. Check and lubricate the ORsealing ring.
Leakage at clear filter head	1.The clear filter head is installed wrong or loose.	1. Install the clear filter head and tighten it by rotation according to Assembly Step 14.
The machine was started at the time of self-priming, but no water flowed out	1.The device is not installed or started in sequence. 2.The Self-Priming Filter is blocked. 3.The Clear Filter Head is blocked. 4.The nozzle is blocked. 5.The water source and the machine are not in the same plane.	1. Operate according to the instructions. 2. Clean the Self-Priming Filter with clean water. 3. Unscrew the Clear Filter Head and clean it. 4. Use a pin to clean the gun head and remove blockages. 5. Please place the machine on the same plane as the water source.
No water came out when the tap was connected	1.The device is not installed or started in sequence. 2.The Clear Filter Head is blocked. 3.The nozzle is blocked.	1. operate according to the instructions. 2. Unscrew the Clear Filter Head and clean it. 3. Clean the gun head with a pin to remove blockages.
Open themachine, the machine will not work, will not start	1.The power plug or socket is faulty. 2.In sufficient voltage below the minimum voltage.	1. Check plugs, sockets, and fuses. 2. Check the voltage and ensure that the voltage is sufficient.
Instability of pressure	1.Air enters the pump body. 2.The gun head is blocked. 3.The seal ring of pump body is worn.	1. Check whether water pipes and connectors are sealed. 2. Clean the gun hole with a needle. 3. Replace the sealing ring or consult customer service.
The motor suddenly stopped running	If the temperature is too high, the motor will protect itself.	1. Check whether the voltage requirements. 2. Check whether the nozzle is blocked and the pressure is high. 3. Turn off the machine and let the motor cool automatically.
The machine starts and stops automatically automatically	1.Water leakage of pump body or high-pressure gun. 2.No water supply.	1. Contact customer service. 2. Connect the water inlet pipe to ensure water supply.
The high-pressure hose cannot be removed	There is still water pressure inside the unit.	1. Turn off the power and release the pressure by pulling the trigger. 2. Contact customer service.

**Warning!** Do not use the machine without reading this manual.

**Warning!** If the power cord is damaged, it must be replaced by professionals from the manufacturer, other professional maintenance departments or similar departments in order to avoid danger.

**Warning!** The power supply must be securely grounded, and the leakage.

**Warning!** Please do not open and operate the unit during rain or thunderstorm. Do not use the unit in any environment that could cause explosion. Keep the work area bright.

**Warning!** Do not discharge water into people, electrically charged equipment, or the machine.

**Warning!** Unplug and disconnect the power when maintaining, cleaning, servicing the machine, and replacing parts.

**Warning!** THE USE OF IMPROPERLY EXTENDED CORD CAN BE DANGEROUS. The plug and socket should be water proof if an EXTENDED cord is used.

If you have any questions, please contact our after-sales team: ElectricPressureWasher@outlook.com

ElectricPressureWasher@outlook.com

# HIGH PRESSURE CLEANING MACHINE INSTRUCTION MANUAL

## WARRANTY SERVICE

Thank you very much for supporting us! Hope our products and services can bring you a pleasant shopping journey. We provide a 2-year warranty, we promise all the Pressure Washers have been 100% carefully checked and packaged before shipping.

Any buyer with any questions who comes to contact us will have our promise to provide you with a satisfactory solution & Extra 6 Month Warranty thanks for your support!

Please send the order to activate the warranty to: ElectricPressureWasher@outlook.com



US After-sales Mailbox



WhatsApp

## PRODUCT INFORMATION

ProductName	High Pressure Washer
Rated frequency	50Hz/60HZ
Product Model	HPW-906
Product Material	ABS
Inlet temperature	40°C

## SPECIAL EXPLANATION

1. Do not place the cleaning machine in a low-lying place with water or get close to water. Drain the water for storage in winter.
2. Please do not idle for a long time without water, which may cause motor damage.
3. To ensure the safety of the machine, do not use other unapproved accessories.
4. If the power cord or important parts of the cleaning machine, such as the safety device, hose, spray gun, etc, are damaged, do not use the machine. Stop using if the water is not suitable or the pressure is warned.
5. Maintain a stable power supply (110V household power supply). Do not use it commercially or at high frequency.
6. Use clean and impurity-free tap water and do a good job of filtering to prevent impurities from blocking.
7. To avoid personal injury, the machine should be closely monitored when used near children.
8. Ensure that the working area is free of idle personnel and keep alert during cleaning.
9. You must be familiar with the position of the control device before you can quickly decompress or stop the machine.
10. The cleaning machine must be placed on a stable bracket. The cleaning machine and spray gun should always be stable and balanced.

Note:

1. Carwash machine-the low end is the water inlet, and the high end is the water outlet.
2. The copper and plastic connection installation methods are the same. The accessories are subject to the purchase package.

Warning: To ensure safety and normal use, please install and use according to the instructions.

If you have any questions, please contact our after-sales team: ElectricPressureWasher@outlook.com

## WHAT'S INCLUDED IN THE PACKAGE?



## HOW TO ASSEMBLE THE PRESSURE WASHER?



01 Take out the 3 screws inside the body.

02 Assemble the bracket on the back. Snap it into the slot on the back and press it in, a snap will be heard.

03 Put 3 screws in the 3 deep holes of the back bracket and tighten with a screwdriver.

04 Take out the 3 screws inside the handle.



05 Install the top handle. Press the handle to snap into the top and hear a snap.

06 There are 3 additional screw holes on the top of the back of the machine.

07 Put 3 screws in the 3 deep holes behind the handle and tighten with a screwdriver.

08 Assemble the holder for storing power cord.

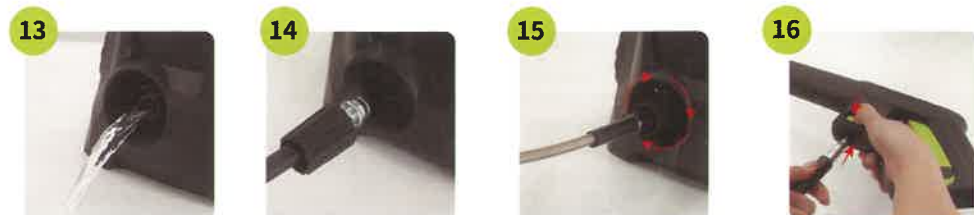


09 Assemble the holder for cleaning gun handle.

10 This is the water inlet hole.

11 If the water flows out normally like this, it means that the water has been connected and installed correctly.

12 Rotate the knob to start the machine.



13 If the water flows out normally like this, it means that the water has been connected and installed correctly.

14 This is the end where the pressure hose goes into the water outlet.

15 Connect the pressure hose to the water outlet. Rotate and screw the black shell of the pressure hose into the water outlet.

16 Press the gun handle button and connect the other end of the water outlet pipe to the gun handle.



17 The nozzle can be stored on an extended cleaning gun rod.

18 Install the nozzle. Pull back the golden casing of the cleaning gun and insert the nozzle into the hole.

19 Assemble stainless steel extended cleaning gun rod.

20 Installing the foam bottle.



21 Assemble wheels

22 Slap the wheel down slightly harder with your hand to make it fit into the wheel slot.

⚠ Please test the machine to ensure it is satisfactory and functioning properly before installing the wheels. The wheels are non-removable; once installed, they cannot be removed. This precaution will prevent any issues that might lead to a return, as the machine may not fit back into the original packaging if the wheels are installed.